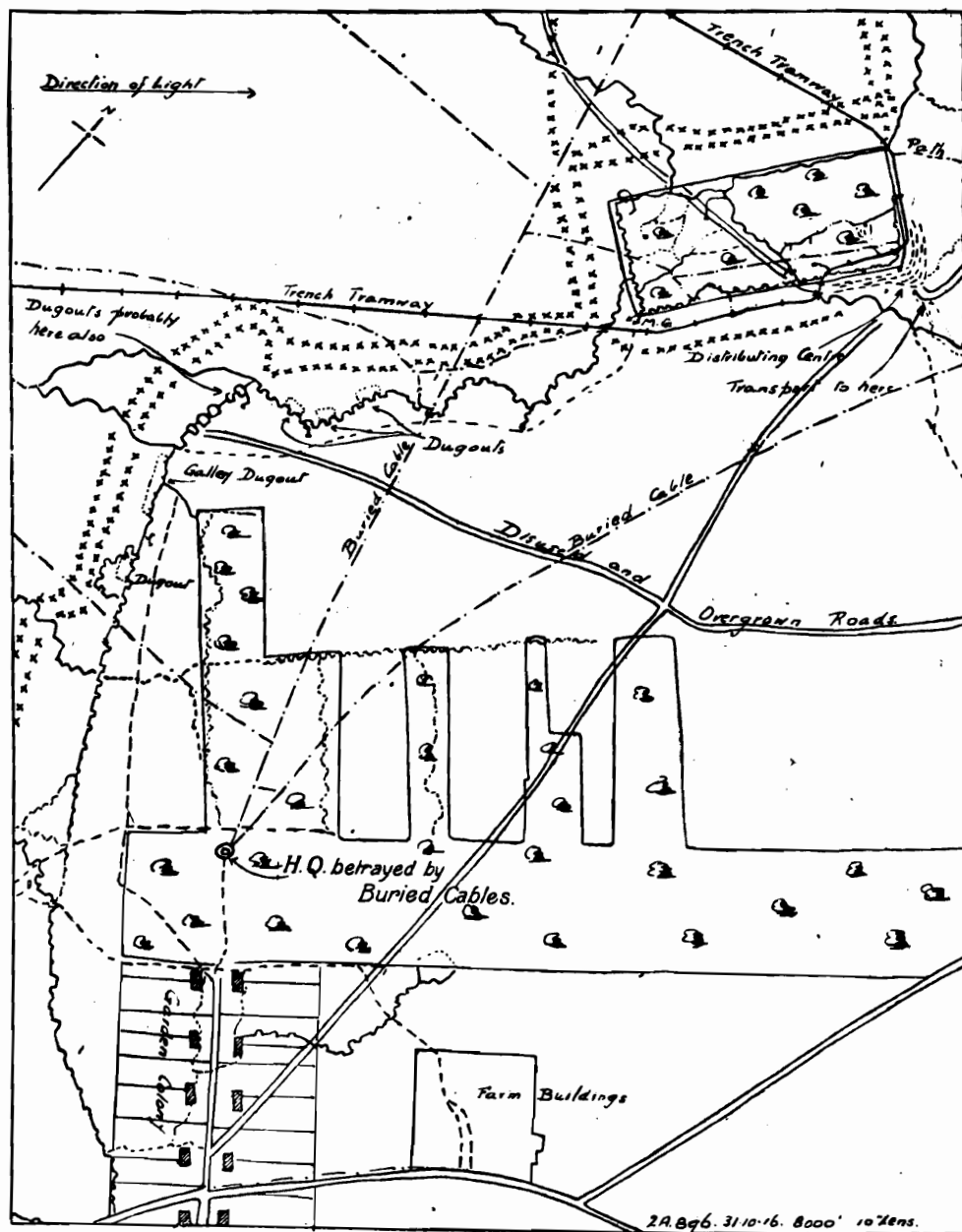
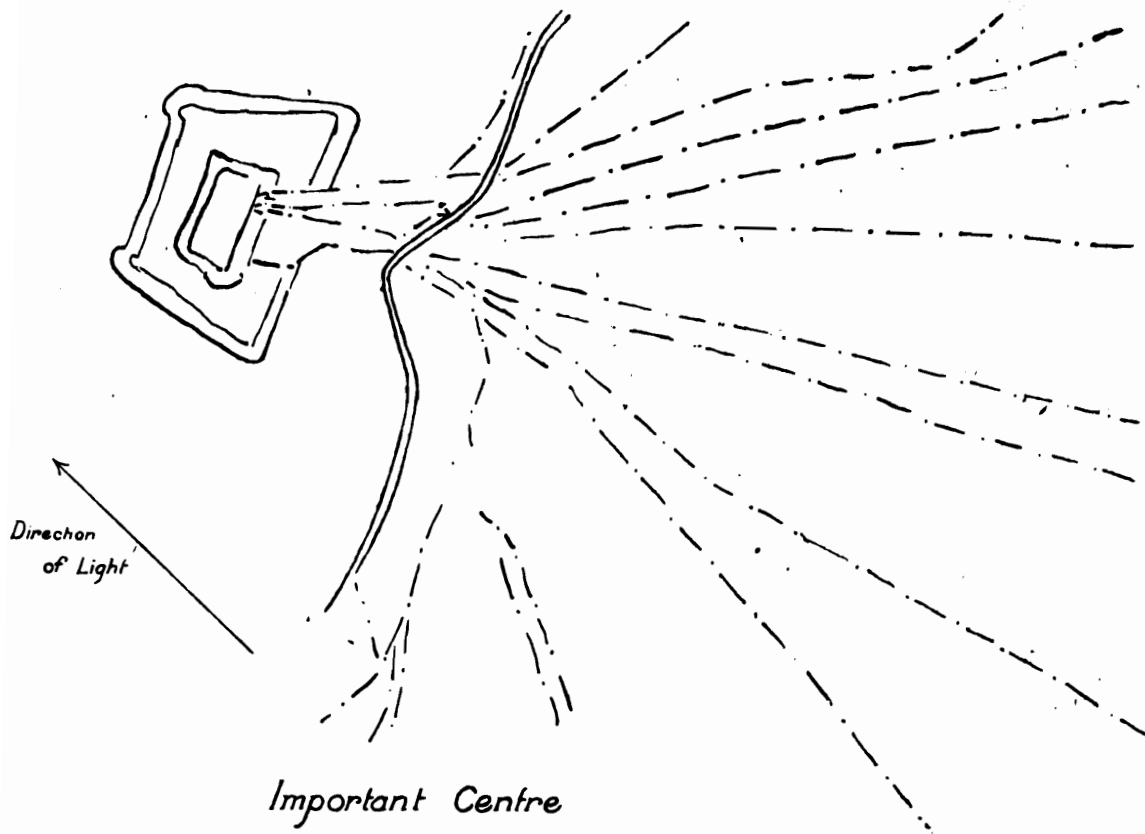
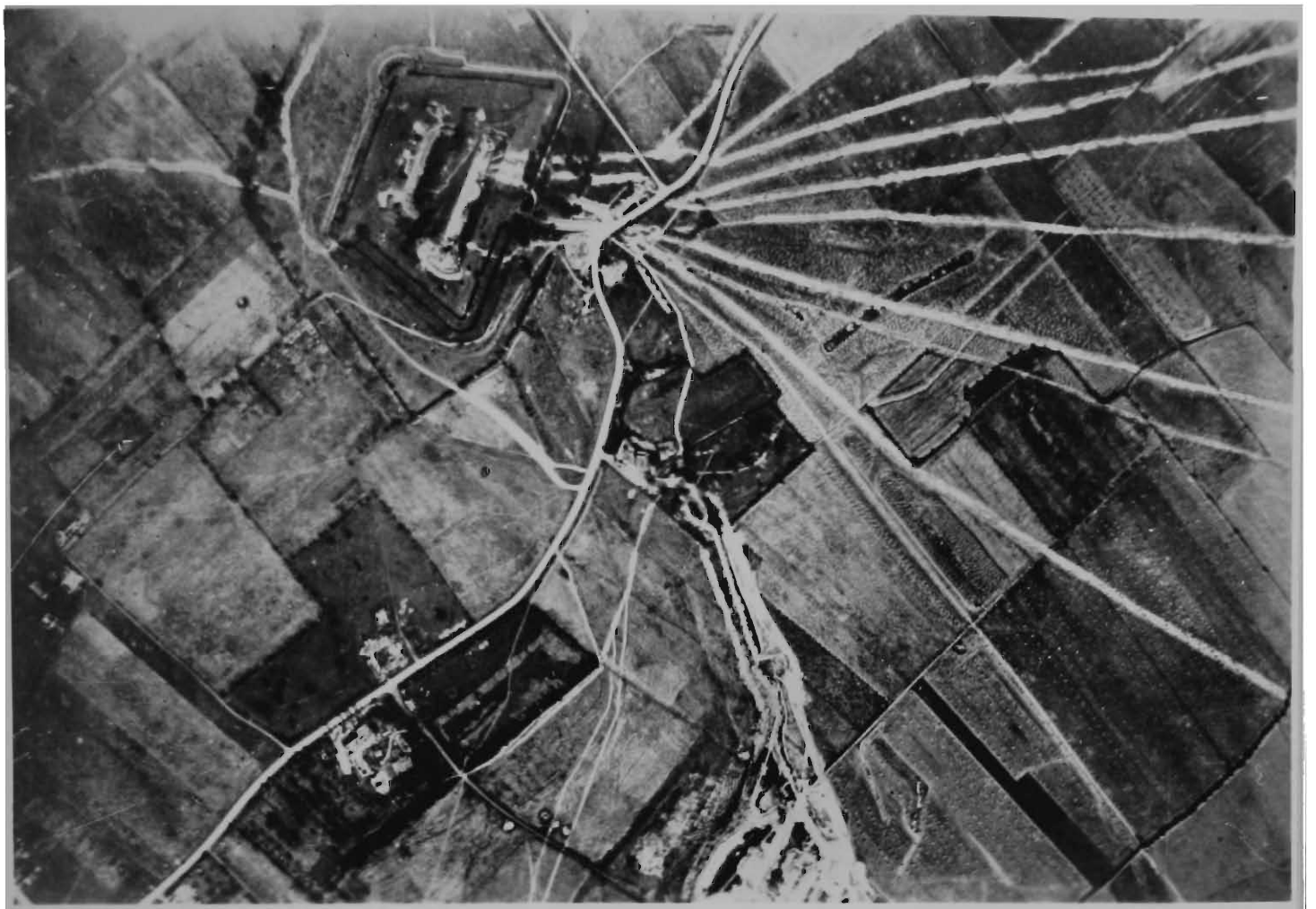


BURIED CABLES.

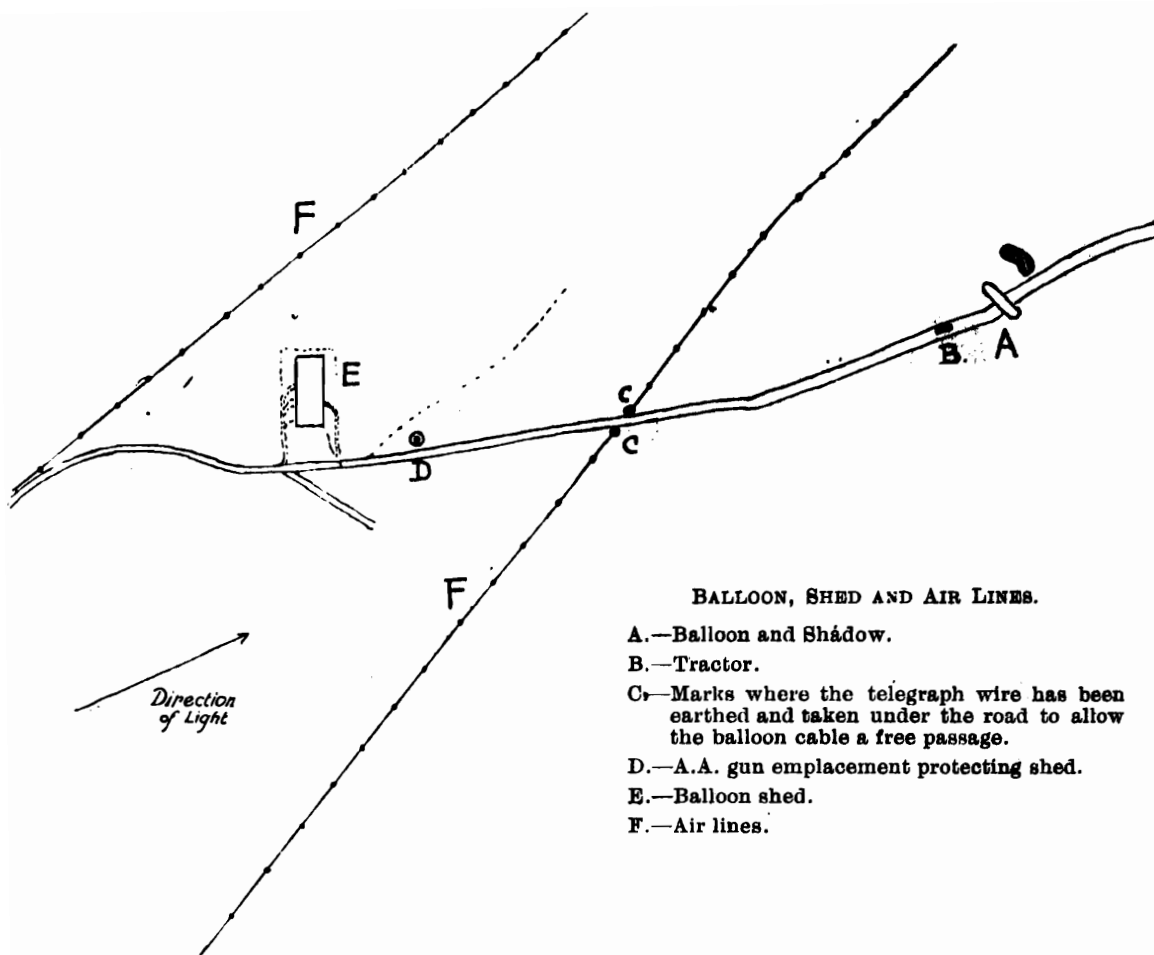
AREA:—Ypres—Comines Canal to La Bassée Canal.
La Bassée Canal to River Scarpe.





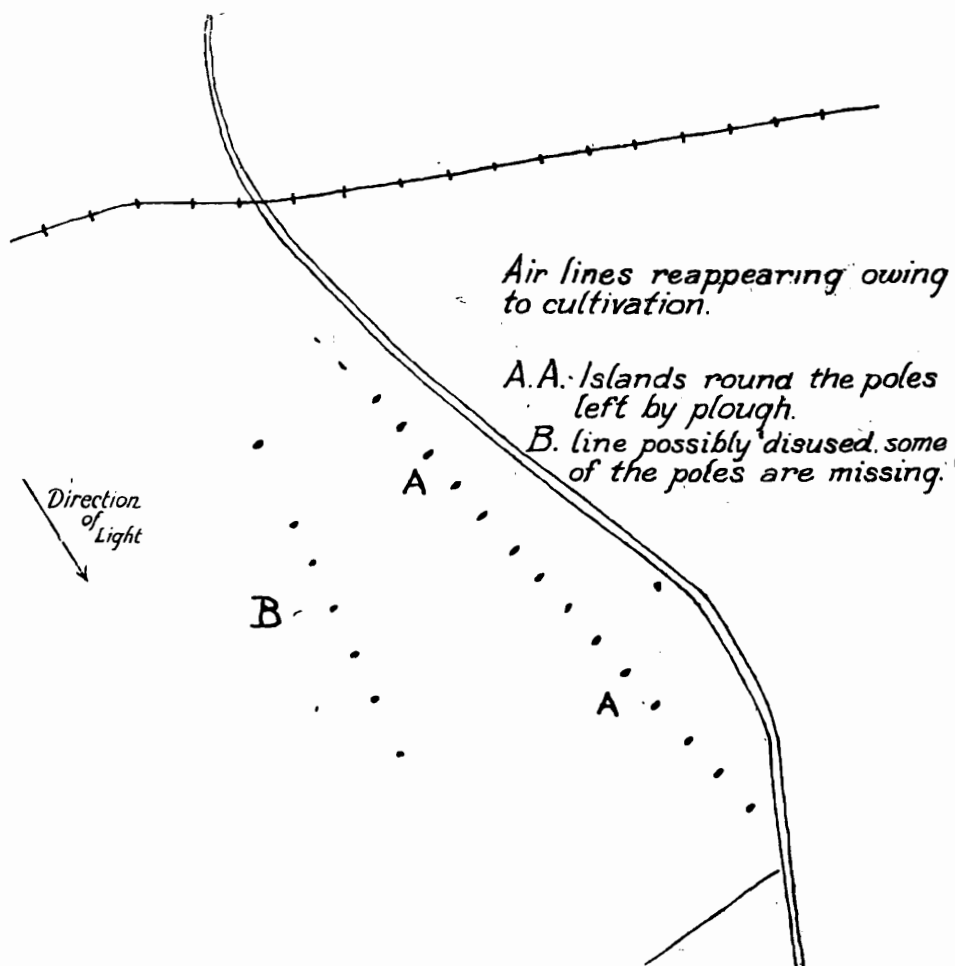
AIR LINES.

AREA :—River Scarpe to River Ancre.



BALLOON, SHED AND AIR LINES.

- A.—Balloon and Shadow.
- B.—Tractor.
- C.—Marks where the telegraph wire has been earthed and taken under the road to allow the balloon cable a free passage.
- D.—A.A. gun emplacement protecting shed.
- E.—Balloon shed.
- F.—Air lines.



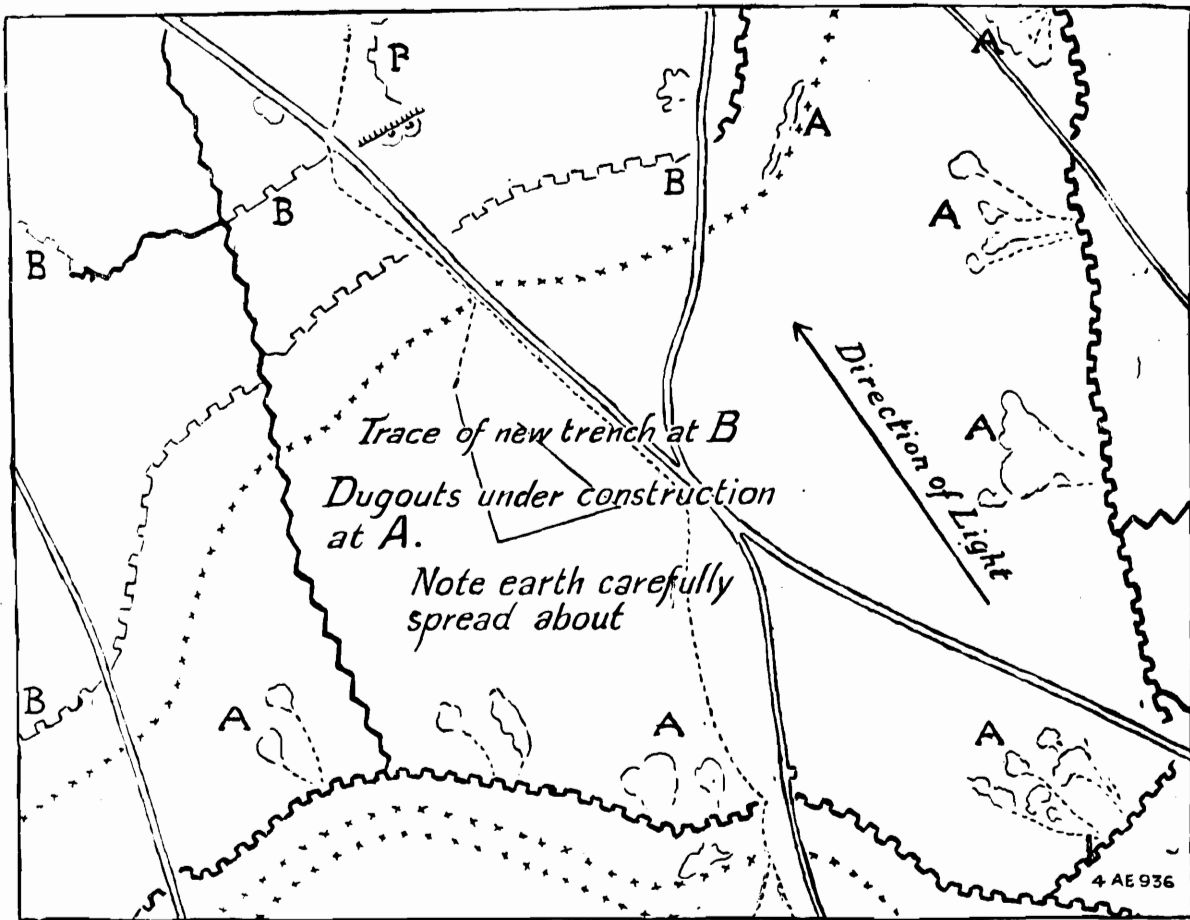
Air lines reappearing owing to cultivation.

- A.A. Islands round the poles left by plough.
- B. line possibly disused, some of the poles are missing.



DUG-OUTS.

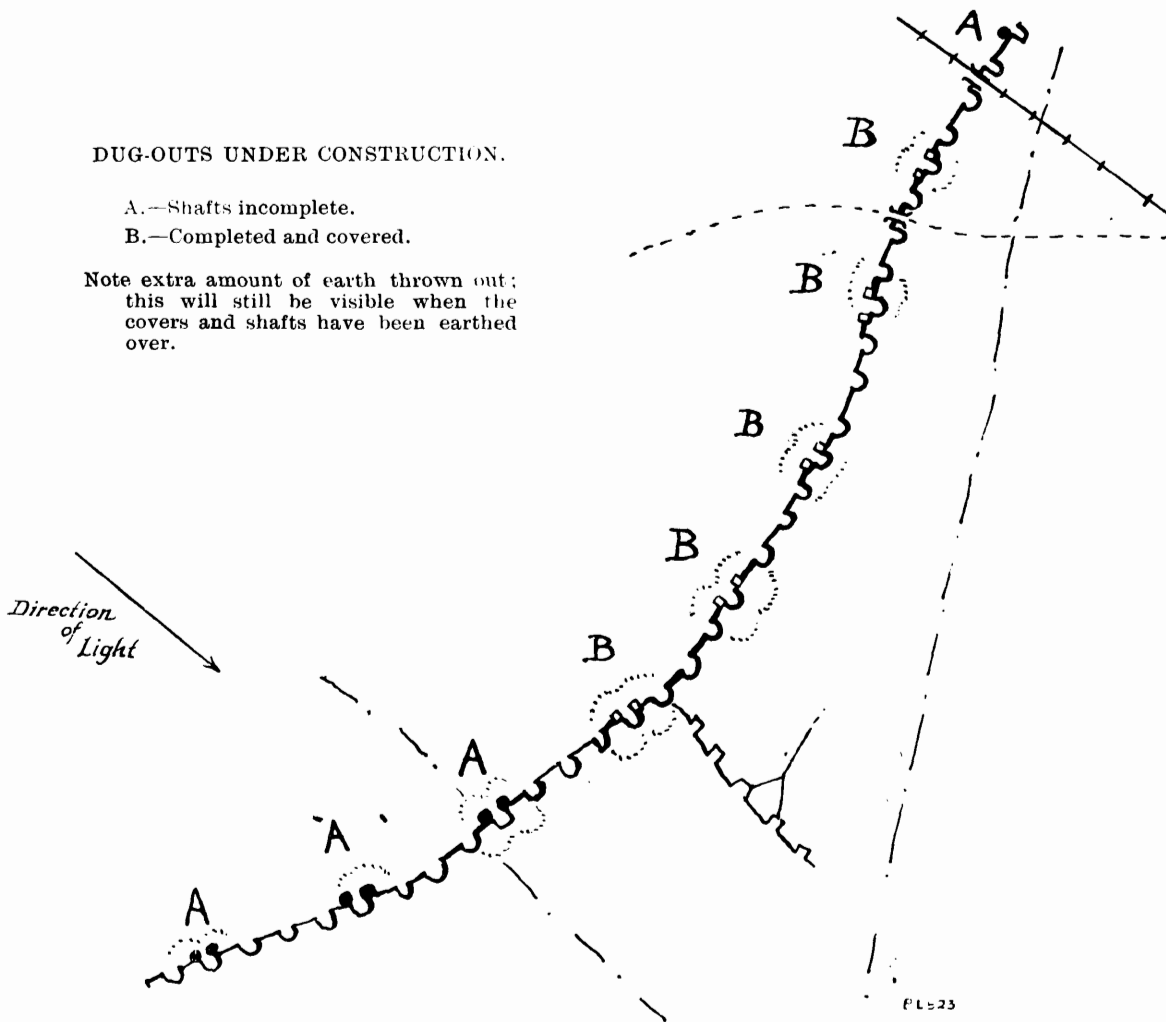
AREA :—River Scarpe to River Ancre.

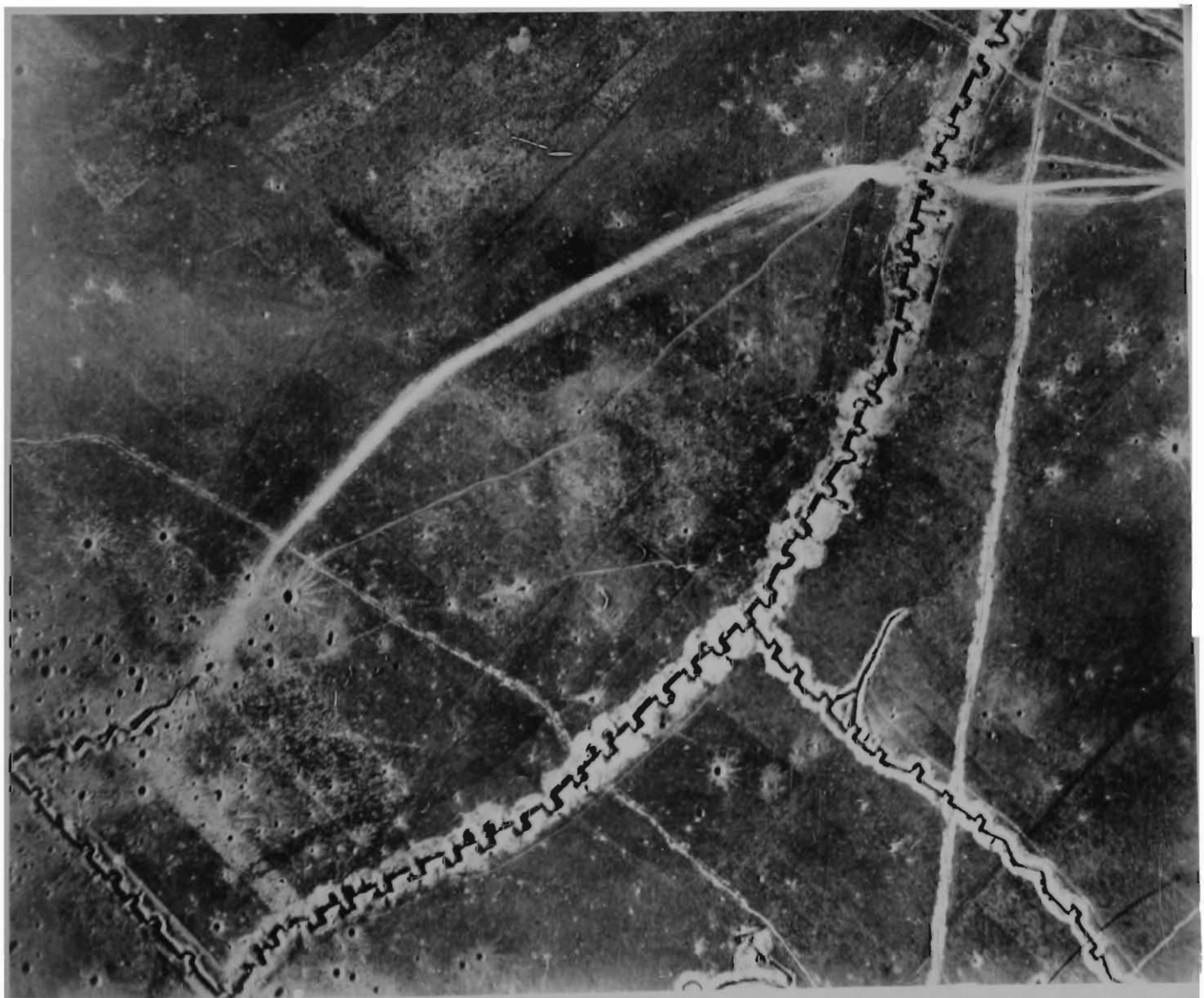


DUG-OUTS UNDER CONSTRUCTION.

- A.—Shafts incomplete.
- B.—Completed and covered.

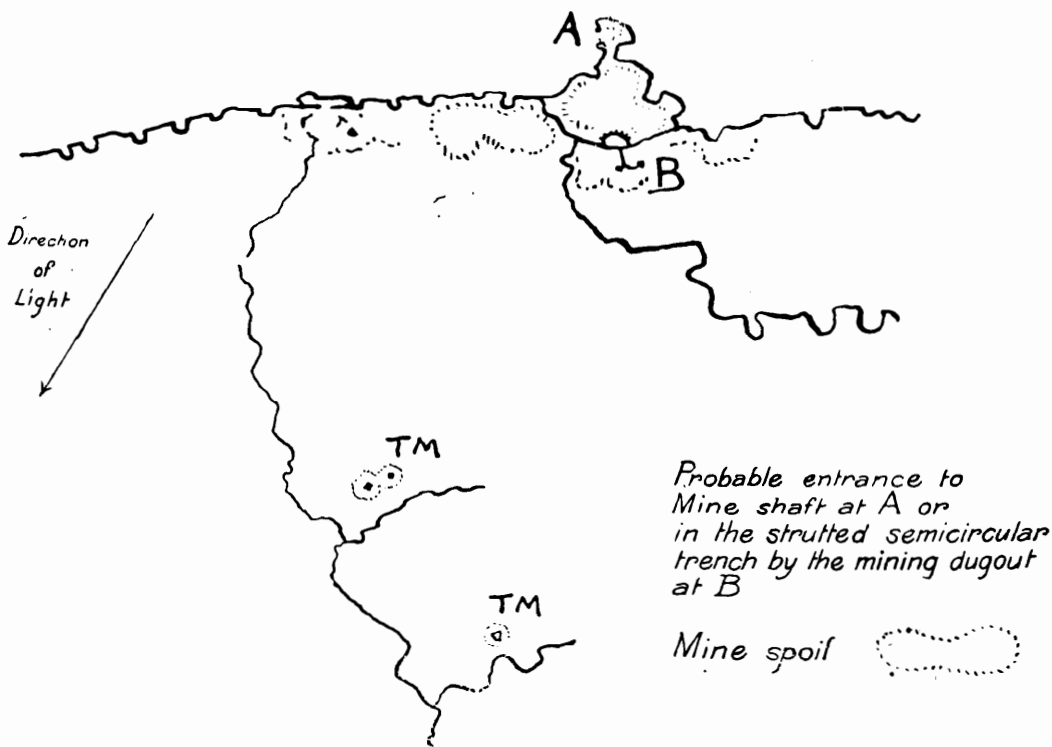
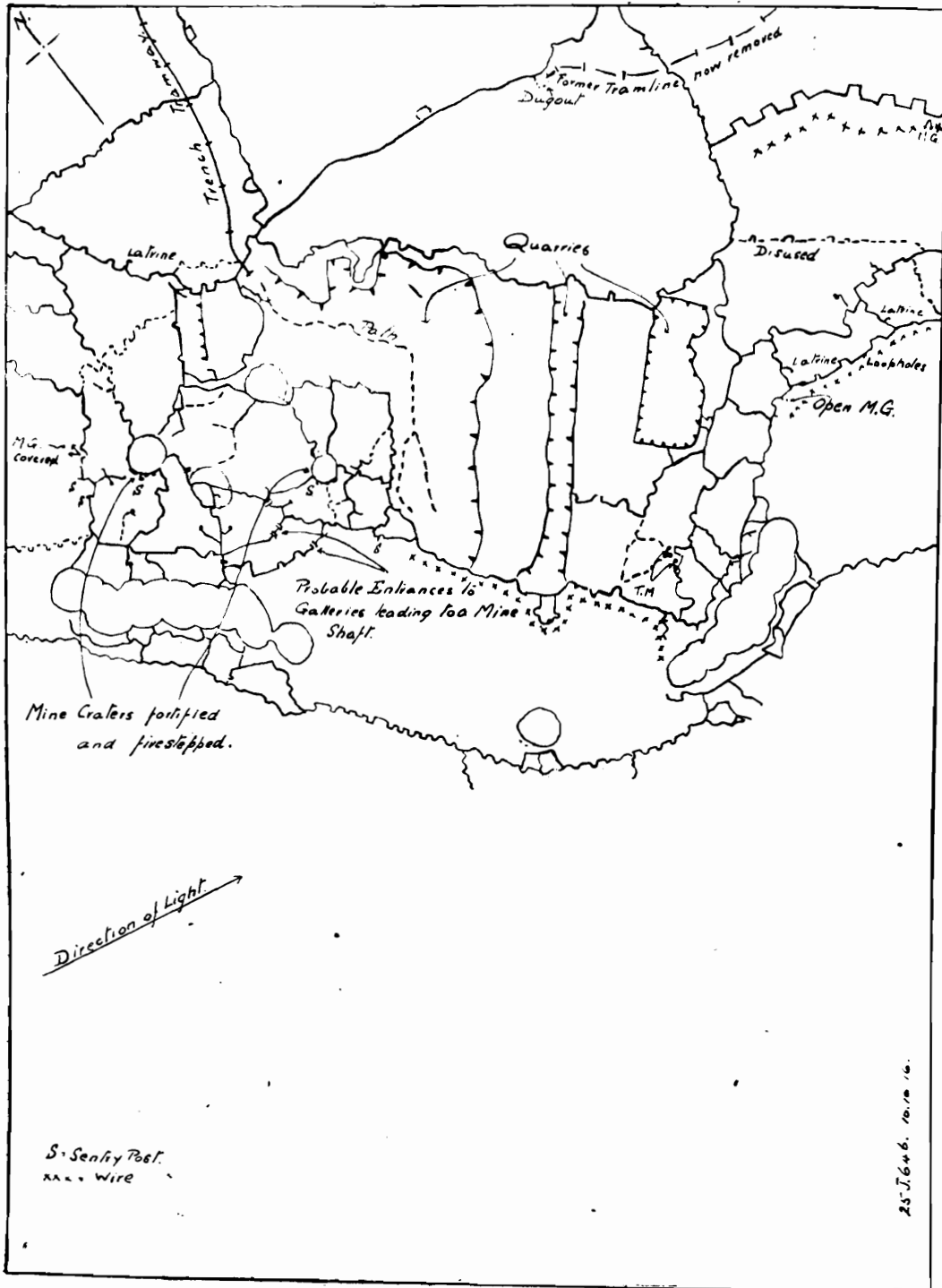
Note extra amount of earth thrown out; this will still be visible when the covers and shafts have been earthed over.

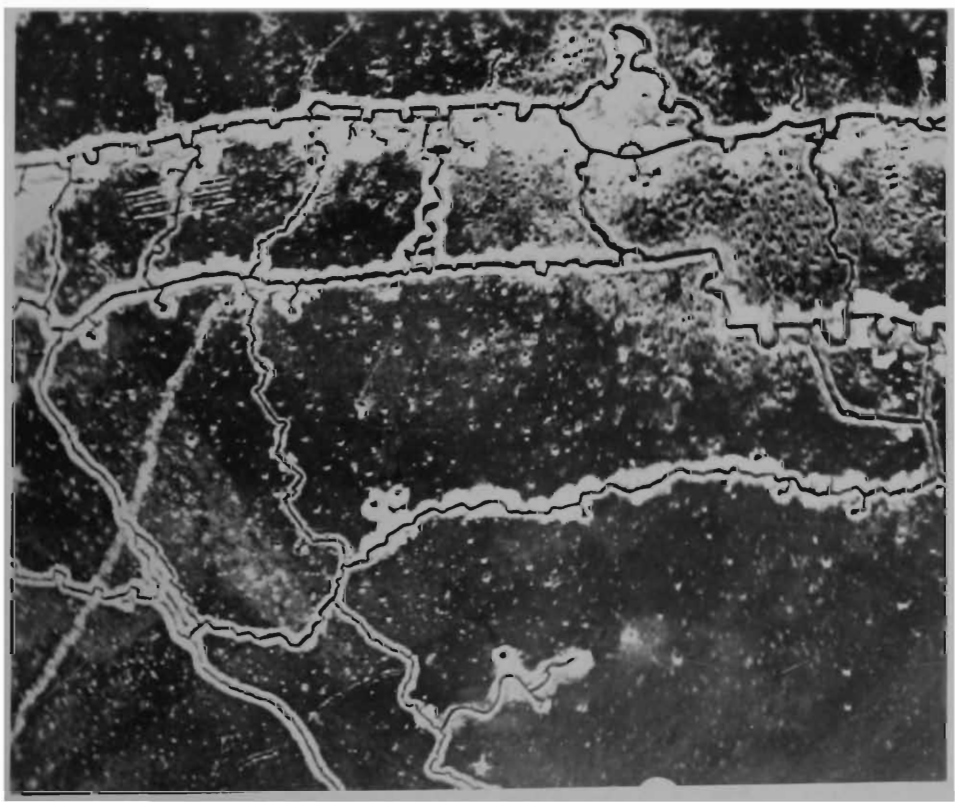




MINE SHAFTS.

AREA :—La Bassée Canal to River Scarpe.

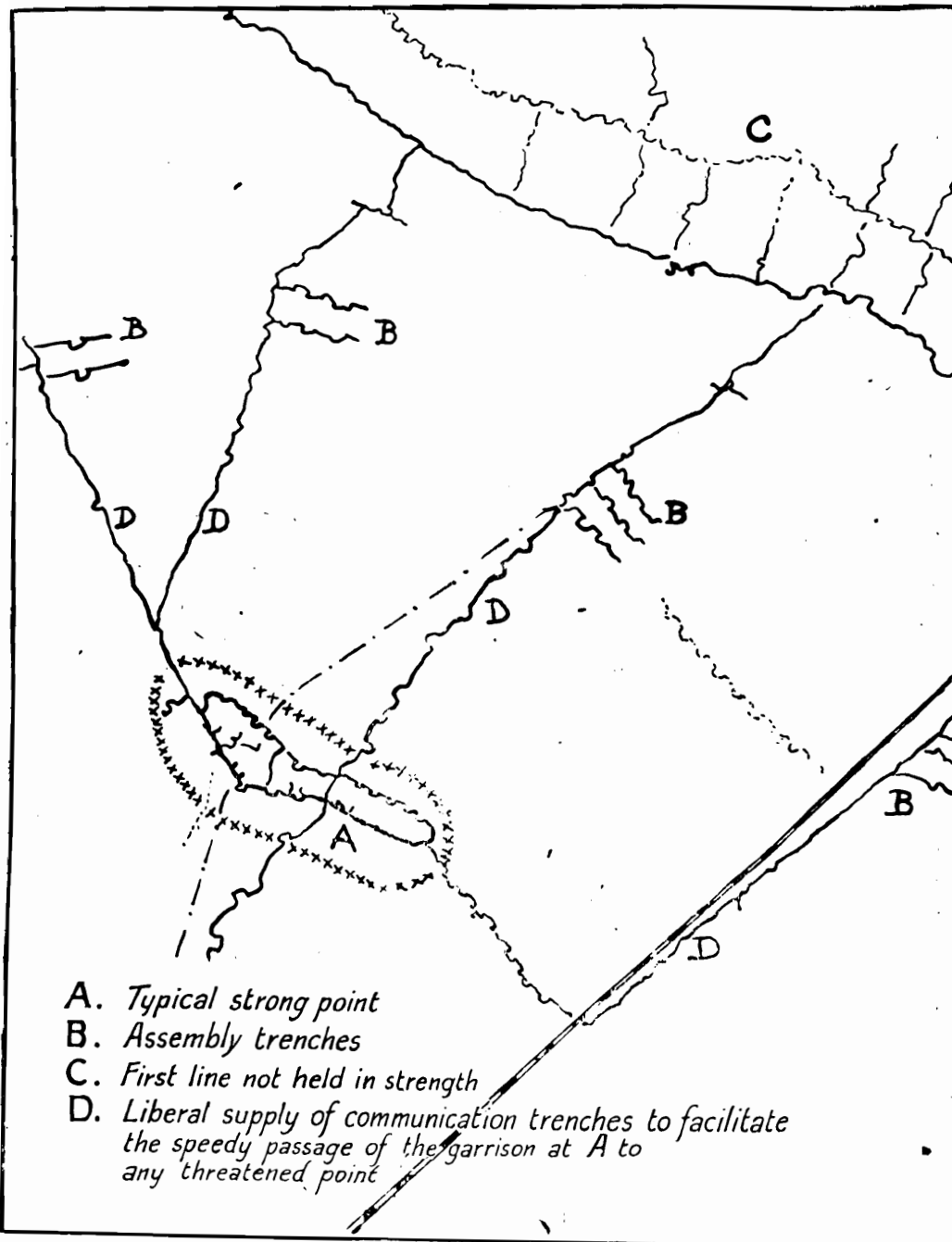
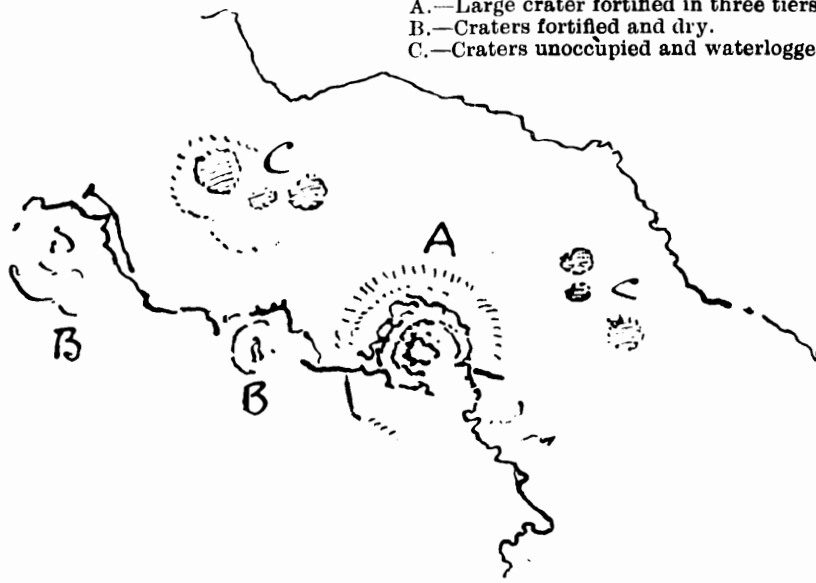




FORTIFIED CRATERS.
TYPICAL STRONG POINT.

AREA :—Ypres-Comines Canal to La Bassée Canal.
River Scarpe to River Ancre.

- A.—Large crater fortified in three tiers.
- B.—Craters fortified and dry.
- C.—Craters unoccupied and waterlogged.

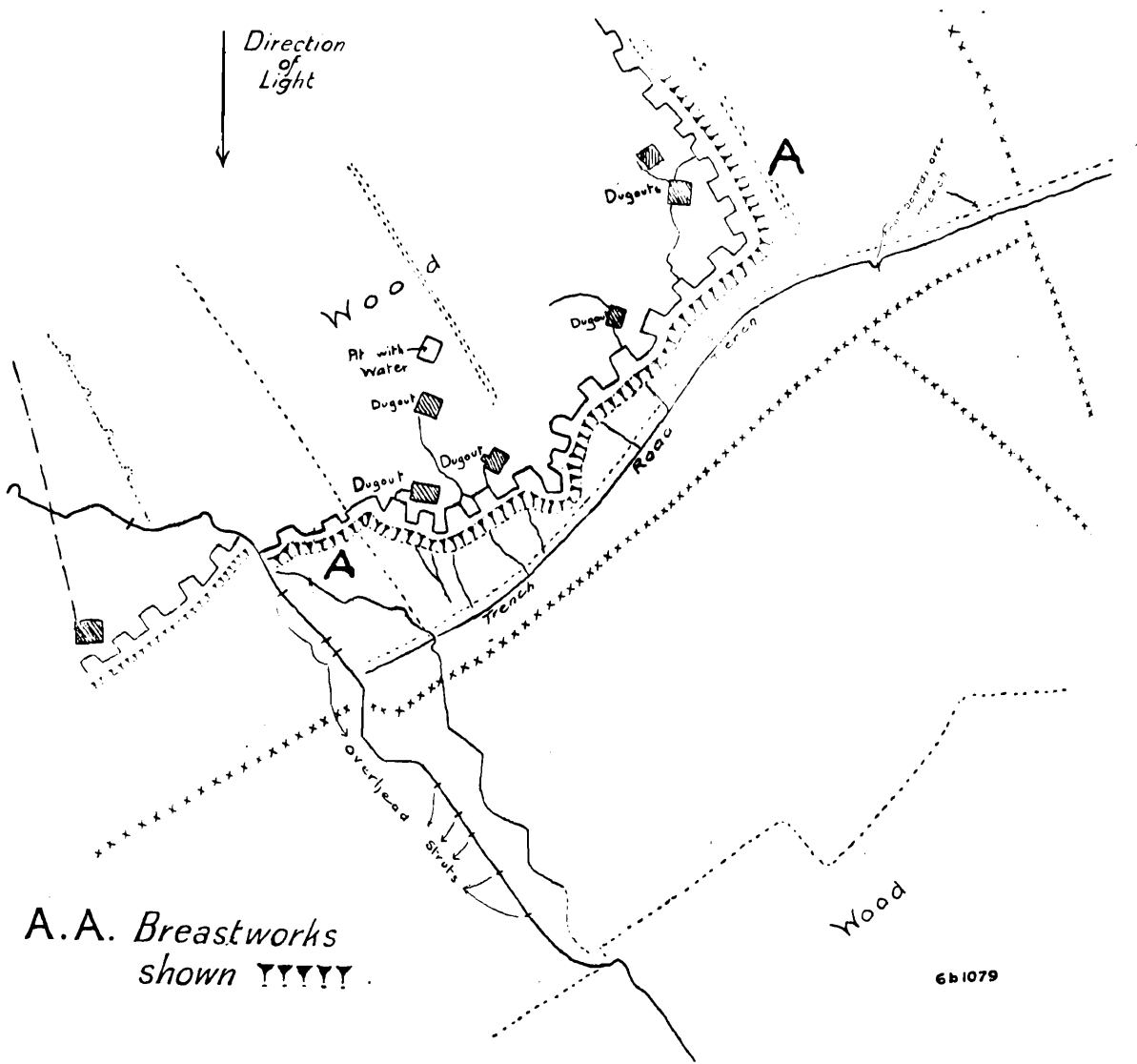


- A. *Typical strong point*
- B. *Assembly trenches*
- C. *First line not held in strength*
- D. *Liberal supply of communication trenches to facilitate the speedy passage of the garrison at A to any threatened point*



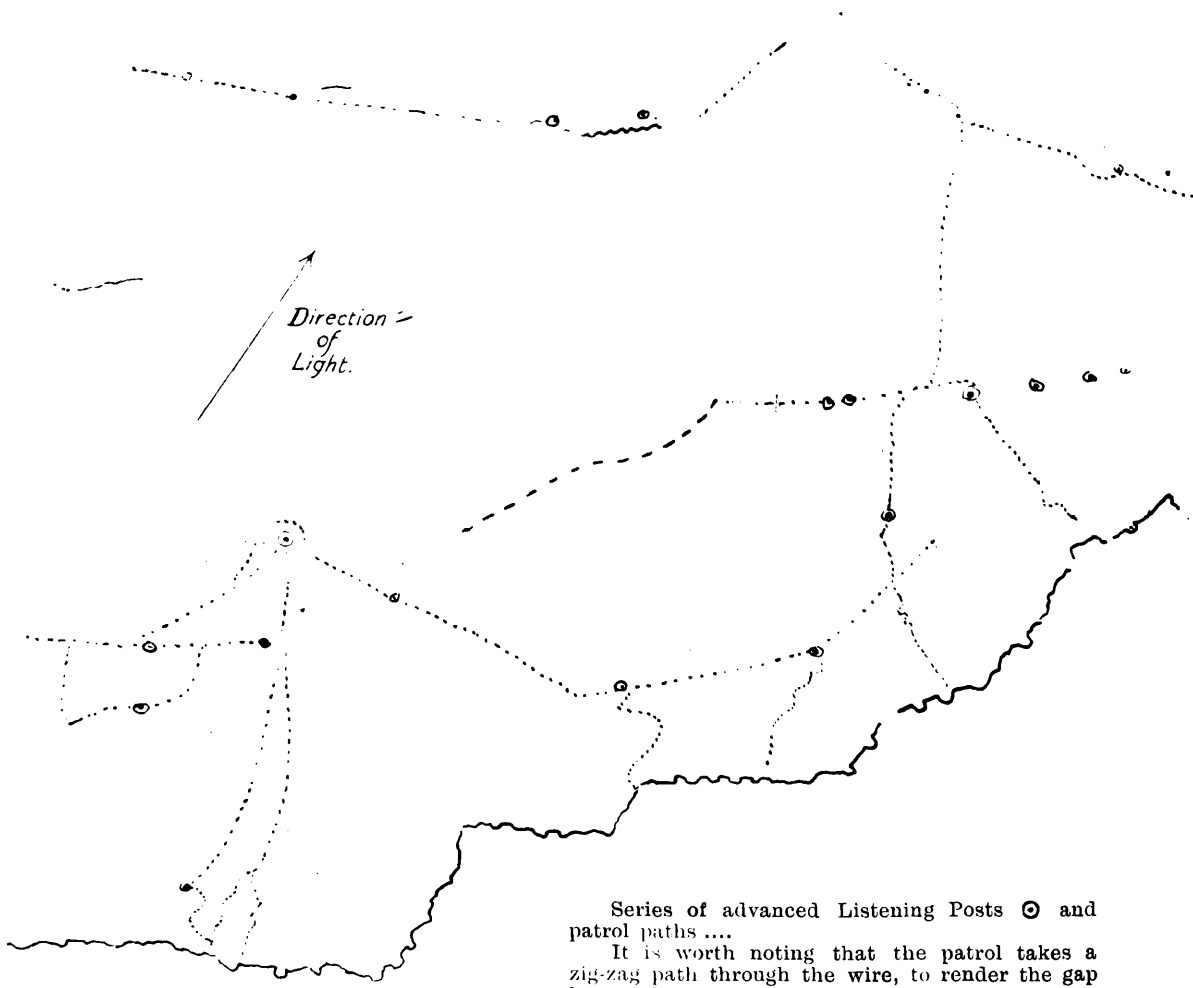
BREASTWORKS.
ADVANCED LISTENING POSTS. TRACKS.

AREA :—Ypres-Comines Canal to La Bassée Canal.
River Scarpe to River Aisne.



A.A. Breastworks shown $\nabla\nabla\nabla\nabla$.

6b1079



Series of advanced Listening Posts \odot and patrol paths
 It is worth noting that the patrol takes a zig-zag path through the wire, to render the gap less obvious from in front.

